



Public Works Department

# Clean Up Day

Clean Up Day is the **fourth Saturday of April** each year. It is open from **8 am to 3 pm** for Roseville residents only.

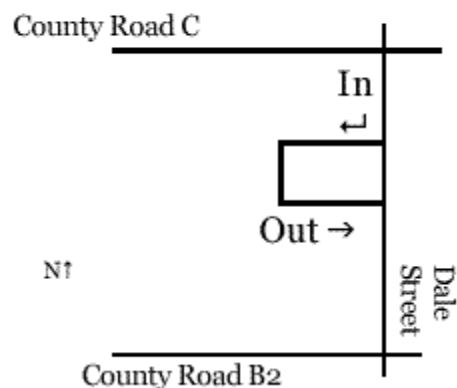
Not all garbage can go in your trash cart. So Roseville organizes an annual Clean Up Day to help residents get rid of items that require special handling or to get rid of an accumulation of stuff. Plus Roseville pays approximately one-third of the disposal costs. Money to pay for the Clean Up Day comes from the sale of your curbside recyclable material, as well as from funds received from the State of Minnesota and Ramsey County.

First figure out if your stuff could be used by someone else. These options are free and charitable donations are tax deductible.

- [Goodwill](#), 1627 County Road B or 2500 Cleveland Ave, accepts reusable clothes, books, sporting goods or housewares
- [Bridging](#), 1730 Terrace Drive, accepts reusable mattresses, box springs, furniture and other household items.
- [Habitat for Humanity ReStore](#), 510 County Road D, New Brighton, accepts new, surplus and like-new building materials.
- Or list items on the [Twin Cities Free Market](#) website.

Bring your unusable items to Roseville's Clean Up Day at the Dale Street Soccer Field Parking Lot, 2555 Dale Street. Pay at the gate with cash or check.

## Roseville Clean Up Day Location



**See Price Chart on page 2 for prices based on items.**

## 2020 Price Chart

<b>General Load:</b>						
Car	\$12.00		Minivan/SUV	\$22.00	Trailer (4'x4'x8')	\$32.00
Pickup Truck	\$32.00					
<b>Specific Items:</b>						
Appliance	\$12.00		Appliance with Freon	\$16.00	Carpet	\$5.00/car
Couch	\$16.00		Stuffed chair	\$10.00	Hide-a-bed	\$28.00
Mattresses & Box Springs	\$16.00		Electronics** (w/ a screen)	\$15.00 (each)	Electronics** (w/o a screen)	\$5.00
Scrap Metal	\$3.00/yard		Auto Batteries	\$2.00		
Tires (car)	\$2.00		Tires (car on rim)	\$2.00	Tires (oversize)	\$3.00
Tractor tires, railroad ties, and other atypical items as determined by the City and Hauler					Prices vary	

You can bring in a load of general garbage and be charged by the size of your vehicle. If you only have bulky items or items that require special handling (listed below) you will be charged for those only. If you have a mixed load, you'll be charged for both.

\*Appliances include includes water heaters, microwaves, dishwashers, washer and dryers. Appliances with Freon include refrigerators, freezers and dehumidifiers.

\*\*Electronics with a screen include TVs, monitors, tablets, etc. Electronics without a screen include Peripherals, VCRs, stereos, keyboards, cords, etc. Computers will be taken to a licensed disassembler and the hard drives scrubbed before recycling.

Roseville is committed to recycling as much of this waste as possible. For instance tires, car batteries, appliances, scrap metal and electronics will all be recycled. We will also be recycling carpet and bicycles. Re-Cycle will be collecting bicycles in ANY CONDITION. Many of the bikes will be restored and returned to the road for re-use. Others will be stripped for parts. Prepare your carpet using [these instructions](#) from Brotex - the St. Paul company where we will deliver the carpet.

Hazardous items such as fluorescent bulbs, lawn chemicals and pesticides will NOT be accepted. Please take those items to the free Ramsey County [Household Hazardous Waste Site](#).

Take brush to a free [Ramsey County Yard Waste Site](#).

Have questions about the Clean Up Day? Contact Roseville Public Works at 651-792-7004 or [Contact Public Works](#).